



# SUBSURFACE CONSTRUCTORS INCORPORATED



www.subsurfaceconstructors.com

WE TAKE THE NEWEST  
TECHNOLOGY  
AND RUN IT INTO THE GROUND.

GROUND IMPROVEMENT   AGGREGATE PIERS   VIBRO COMPACTION   DRILLED SHAFTS   EARTH RETENTION   DRIVEN PILE   AUGERCAST PILE   MICROPILE

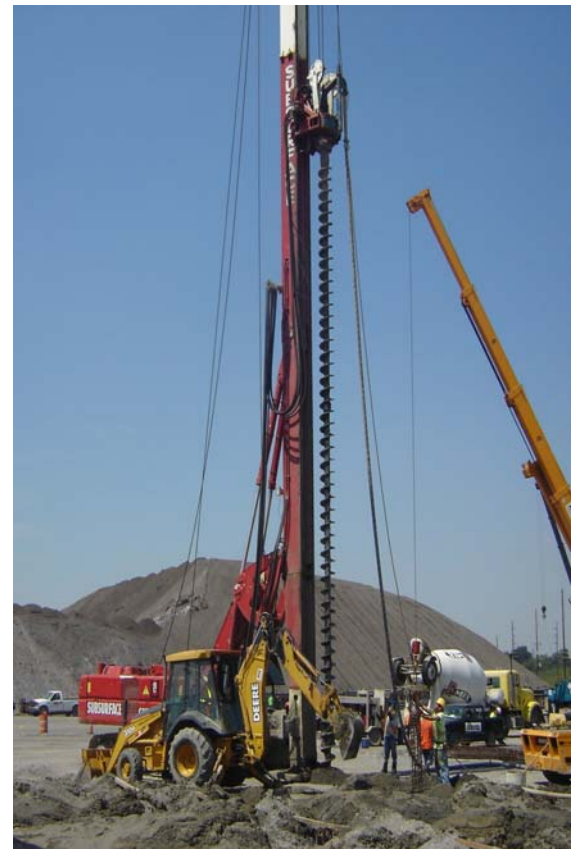
## Gateway Energy and Coke Facility US Steel Plant, Granite City, IL

### PROJECT DESCRIPTION

#### 2,400 Augercast Piles to Support Major Plant Expansion

A new coke facility was constructed at the existing U.S. Steel Facility in Granite City, IL. This facility consisted of 120 coke ovens with associated infeed and outfeed structures, a coal silo, conveyor towers, and pipe racks. The fill soils and natural silts and sands at this site made augercast piles the most appropriate deep foundation element for support of the heavily-loaded structures..

Subsurface Constructors was selected as the geotechnical contractor to install roughly 2,400 augercast piles to a depth of 50 feet. Piles had diameters of 18-in and 24-in to support loads of 60 tons and 100 tons, respectively. Two load test were also successfully performed by loading the piles to twice the design load.



### PROJECT TEAM

**Owner:**

Gateway Energy and Coke Co.

**Structural Engineer:**

Industry and Energy Associates

**Geotechnical Engineer:**

Geotechnology, Inc.  
Shively Geotechnical

**Deep Foundation Contractor:**

Subsurface Constructors, Inc.

TODAY'S INNOVATION WITH 1906 ROOTS.